



中国人口与发展研究中心

China Population and Development Research Center

Strengthen cooperation, further population sharing

——the proposal to establish the
Asian Population Research Data Alliance

Hongyan LIU

Deputy Director General , senior researcher
China Population and Development Research Center

Guncun Park Hotel , Shanghai 12/10 2016

Why we need data-sharing?

Population data :

basic, strategic and public information resources

inadequate sharing, dissemination and integration

Advocacy by UN

49th CPD ,2016:

----population data: **public product**

----encourage open-data policies allowing dissemination of public-use, geo-referenced and **anonymized microdata**

Commitment of China

- Enhance collection, **integration, sharing** of demographic data
- **promote** the **open sharing** of population data

administration data: national basic strategic resource

(Wang Pei'an)

The openness and nature of sharing of population data

Census 1982, 1990, 2000, 2010,

- Hard to access micro data

Surveys

- Surveys conducted by CPDRC
- Surveys conducted by other organizations
CGSS, CHARLS, CFPS.....
- Limited openness.....

Civil registration records(birth, death, marriage,.....)

- belong to different department,
- restricted openness

The platform of NSB of China



National Bureau of Statistics of China

[Home](#)[Data](#)[Communiqués](#)[Legal Framework](#)[Classifications & Methods](#)[Press Release](#)[International Cooperation](#)[Understanding Statistics](#)

Annual Data

Statistical Database

- [Monthly Data](#)
- [Quarterly Data](#)
- [Annual Data](#)
- [Census Data](#)
- [Other Data](#)

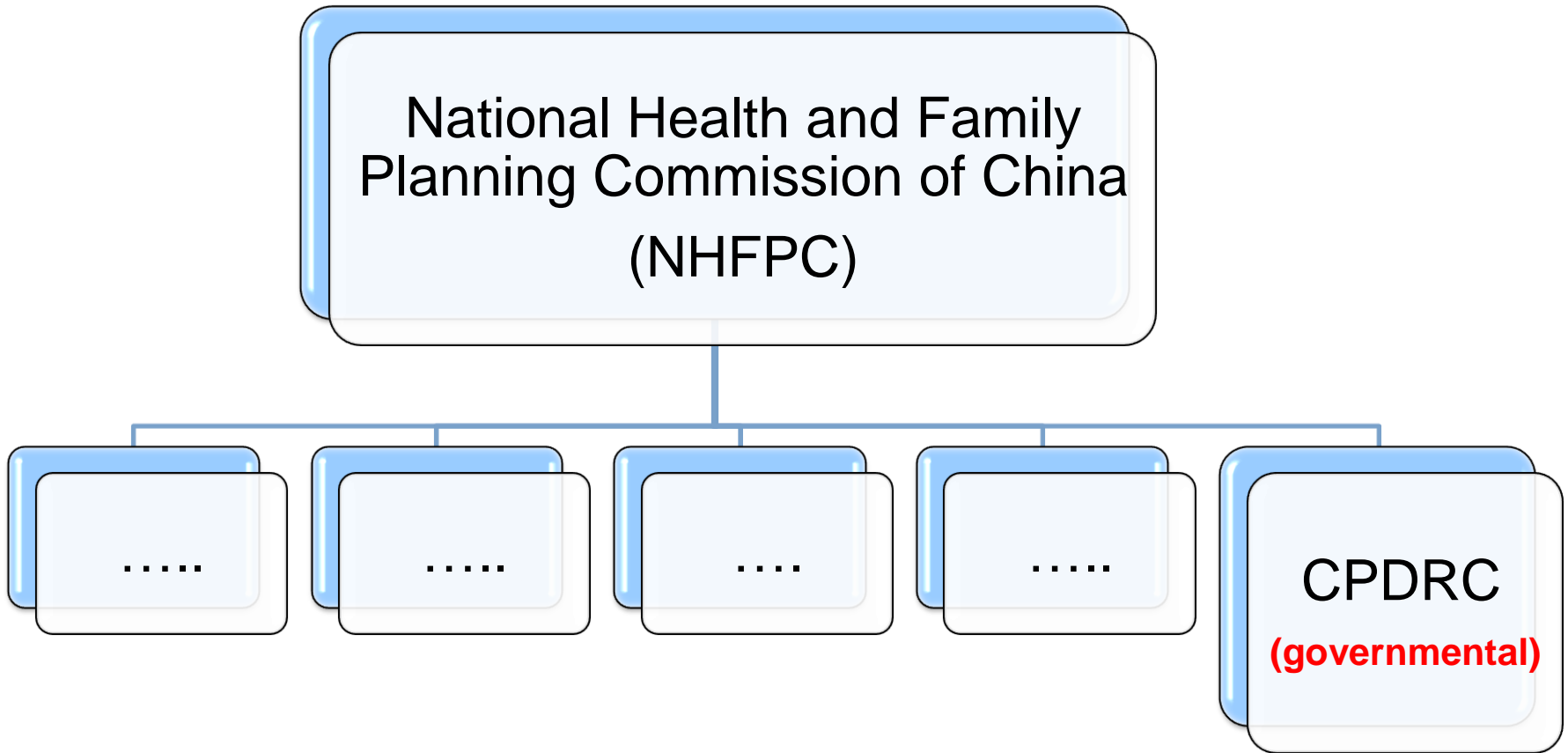
[Home](#) > [Annual Data](#)

2015	2014	2013	2012	2011
2010	2009	2008	2007	2006
2005	2004	2003	2002	2001
2000	1999	1998	1997	1996

What we are trying to do?

Open-sharing micro population data Of China

Know more about CPDRC



CPDRC (91)

Population
Research
(17)

Survey and
evaluation
(10)

Information
and network
system
(12)

Demographic
laboratory
(9)

Information
consulting
(7)

**Producing
survey data**
Data analysis

Maintain
registration data

Data analysis
Population
projection

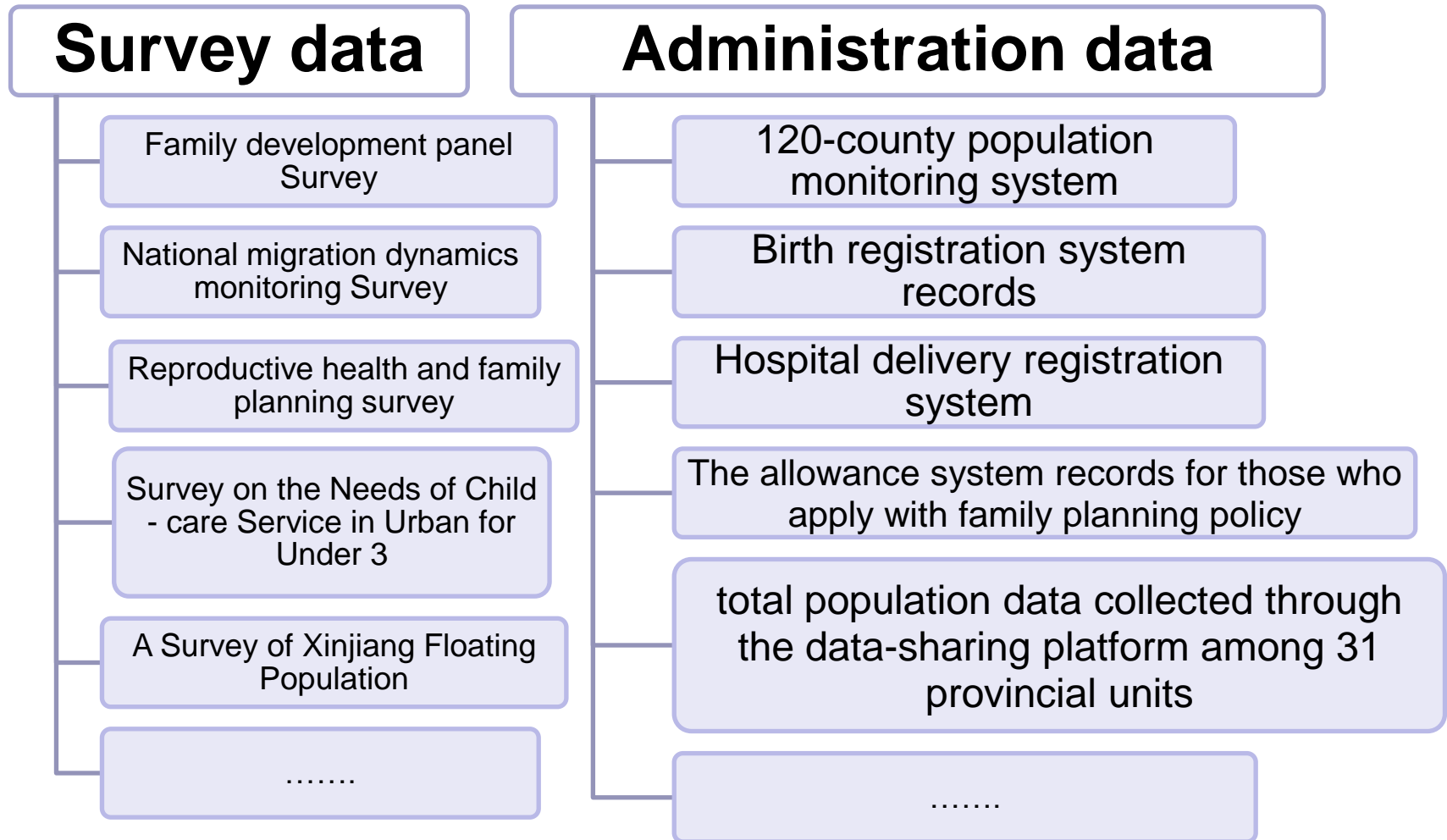
PADIS-INT
(software)

Library
(the biggest
population
library in China)

historic data

What we can contribute?

population data produced or managed by CPDRC



The surveys !

- ❑ Family development panel Survey, 2014, 2016 wave
- ❑ Annual national Migration dynamics monitoring Survey, 2009-2016
- ❑ Reproductive health and family planning survey in 1992, 1997, 2001, 2006,
- ❑ Survey on health and family planning services for migrants in outflow area, 2013, 2014
- ❑ Surveys of Population Flow and Its Influencing Factors in border area, environment vulnerable area and minority inhabited area (2011, 2012)
- ❑ Survey on Citizens' Rights of Reproductive Health, 2006, 2008, 2012, 2014
- ❑ Survey of Culture-Sensitive MCH Component 2009, 2011

(Continuous survey)

The surveys!

- Annual national Migration dynamics monitoring Survey, 2009-2016
- Survey on health and family planning services for migrants in outflow area, 2013,2014
- Surveys of Population Flow and Its Influencing Factors in border area, environment vulnerable area and minority inhabited area (2011,2012)
- Survey on the Use of Community Health Services by Floating Population (Save the Children),2011
- Baseline survey on social services promotion projects for mobile female youths,2012

Migration

- Family development panel Survey,2014,2016 wave
- Survey on the Needs of Child - care Service in Urban for Under 3, 2016
- Baseline survey on providing service needed for parents whose only-one child died,2012
- Baseline Survey on "Care for Girls“,2003

family

development

- Survey on Privacy Protection,2008
- Baseline Survey on Human Rights Protection,2006

Human rights

The surveys!

- Reproductive health and family planning survey in 1992,1997,2001,2006,
- Survey on knowledge, attitude and behavior of **emergency contraception** among **unmarried adolescents** in Beijing,2011
- HIV / AIDS related knowledge survey for rural women, 2009
- Baseline Survey and endline Surveys of **Female Condom Acceptability**,2013
- A survey of the relationship between **informed choice and induced abortion**,2005
- UNFPA / China CP6 Youth Project Baseline Survey,2007
- Baseline Survey of the **Integration of HIV / AIDS Prevention and Reproductive / Family Planning Service**,2008
- Survey of safe migration and HIV / AIDS prevention in northern border China,2008
- China / UNFPA Baseline Survey on Reproductive Health / Family Planning Fifth Cycle Project,2003
- Survey of Culture-Sensitive MCH Component 2009,2011

RH

The surveys!

- **Family development panel survey**

2014, 2016 wave,

32,494 households, 184,439 individuals

- **Annual national migrants dynamics monitoring survey**

2009, 2010, 2011, 2012, 2013, 2014, 2015, 2016, to be continued

200,937 migrants interviewed, information of their family members are collected (667,122) in 2014

- **Reproductive health and family planning survey**

1992, 1997, 2001, 2006, 2017

2001: women in reproductive age 39,586 interviewed,

involves 47,043 households, 1,041 communities, 337 counties,

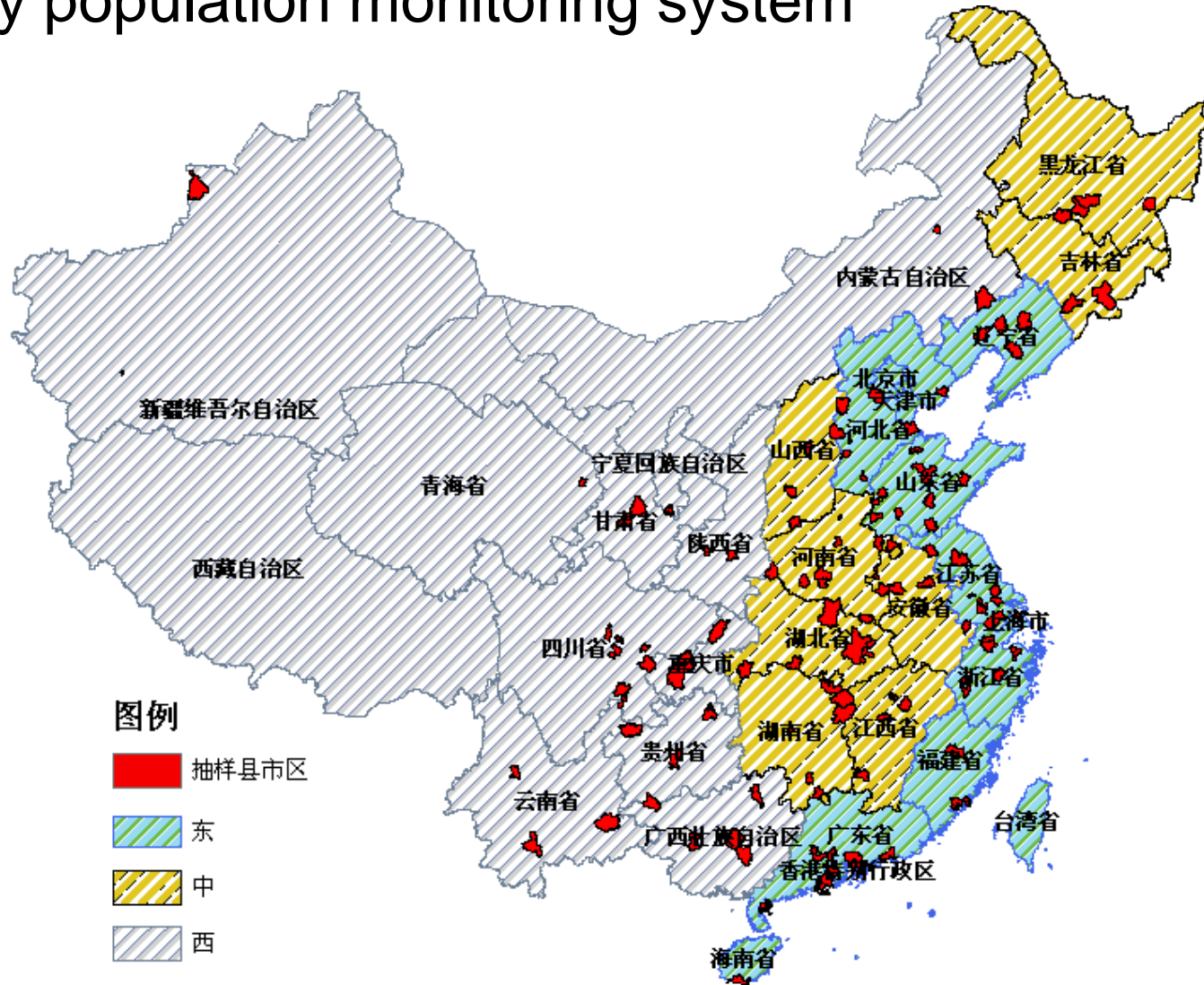
,

The open-accessible information of each survey

- Name and topic of each survey
- time, sites, sample
- sampling method
- manual of the survey
- questionnaires
- data (in .txt, .csv, or other type)
- data-use application form

Administration data Case: 120-county population monitoring system

120-county population monitoring system



Administration data Case: 120-county population monitoring system



Database of **households**

28 variables

- Birth date
- Place of birth
- Urban/rural
- Edu
- Ethic
- Current residence



Database of **women**

28 variables

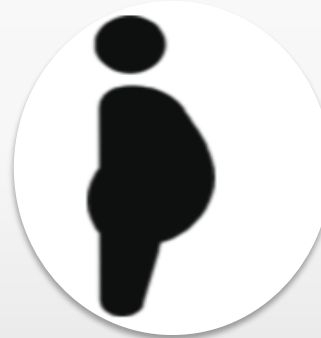
- Birth date
- Date of marriage
- Birth date of husband
- Edu



Database of **children**

12 variables

- Birth date
- Sex
- Parity
- Health at birth
- Health at current
-



Database of **pregnancy history**

12 variables



Database of **contraception**

7 variables

Matching through unique ID of each person

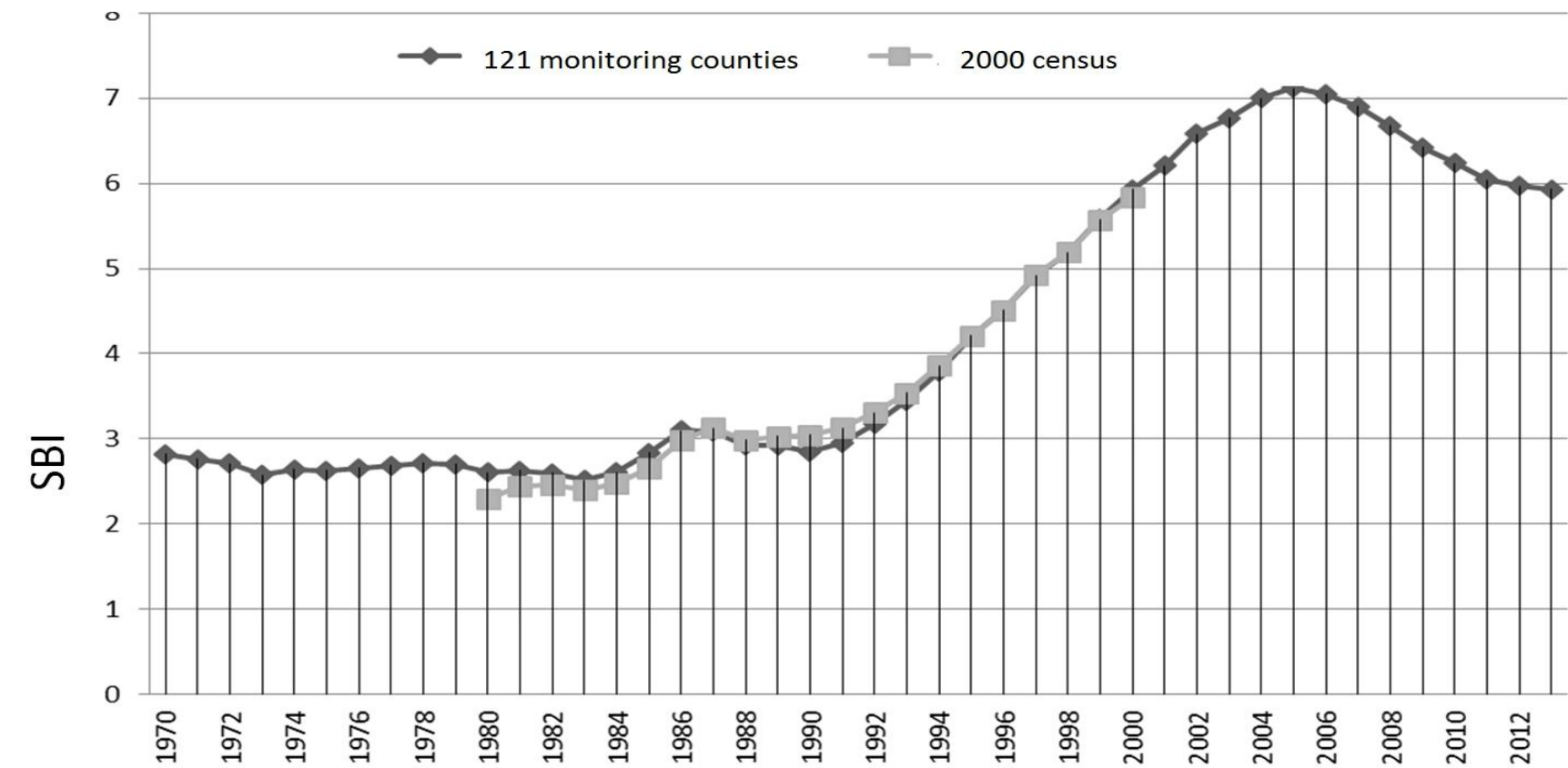
Age structure of population of China in 2015

	National Population Change Sampling Survey in 2013		120-county population monitoring system	
	Total(M)	%	Total(M)	%
Male	704	51.2	48	51.6
Female	670	48.8	45	48.4
0-15	241	17.6	14	15.3
16-59	911	66.3	64	68.6
60+	222	16.1	15	16.2

Age Structure of Married Women of Childbearing Age in 2013 (%)

Age group	120-county population monitoring system	National Population Change Sampling Survey in 2013
15-19	0.21	0.51
20-24	6.94	7.21
25-29	17.02	15.82
30-34	18.18	16.81
35-39	17.85	17.61
40-44	21.00	21.64
45-49	18.79	20.39

Average second birth interval in China



Cuiling Zhang, Hongyan Liu and Yu Jiang, *The second birth interval in China since 1970s: the role of birth spacing policies*, presented at the European Population Conference 2016(Mainz, Germany, August 31-September 3, 2016). <http://epc2016.princeton.edu/uploads/160121>.

Jun Wang. "Study on the hierarchical model for measuring the impacts of China's fertility policy on SBI", *South China Population*, 4th Issue, 2013.

What we are doing?

- Collecting data we produced;
- anonymized micro data
- Standardization
- respect for confidentiality

Proposals:

- Establishment of the Asian Population Data Alliance
- Partners research institutions contribute anonymized micro-data
- Data is free-open to research society
- Comparative studies are encouraged

Wish it can see you soon!

Thanks for your attention.

- Questions?
- Comments?
- Suggestions?

Email: liuhycpdrc@126.com zcl_cpdrc@126.com

Website: <http://www.cpdrc.org.cn>

Add: No. 12 Dahuisi Road, Haidian District, Beijing 100081, China